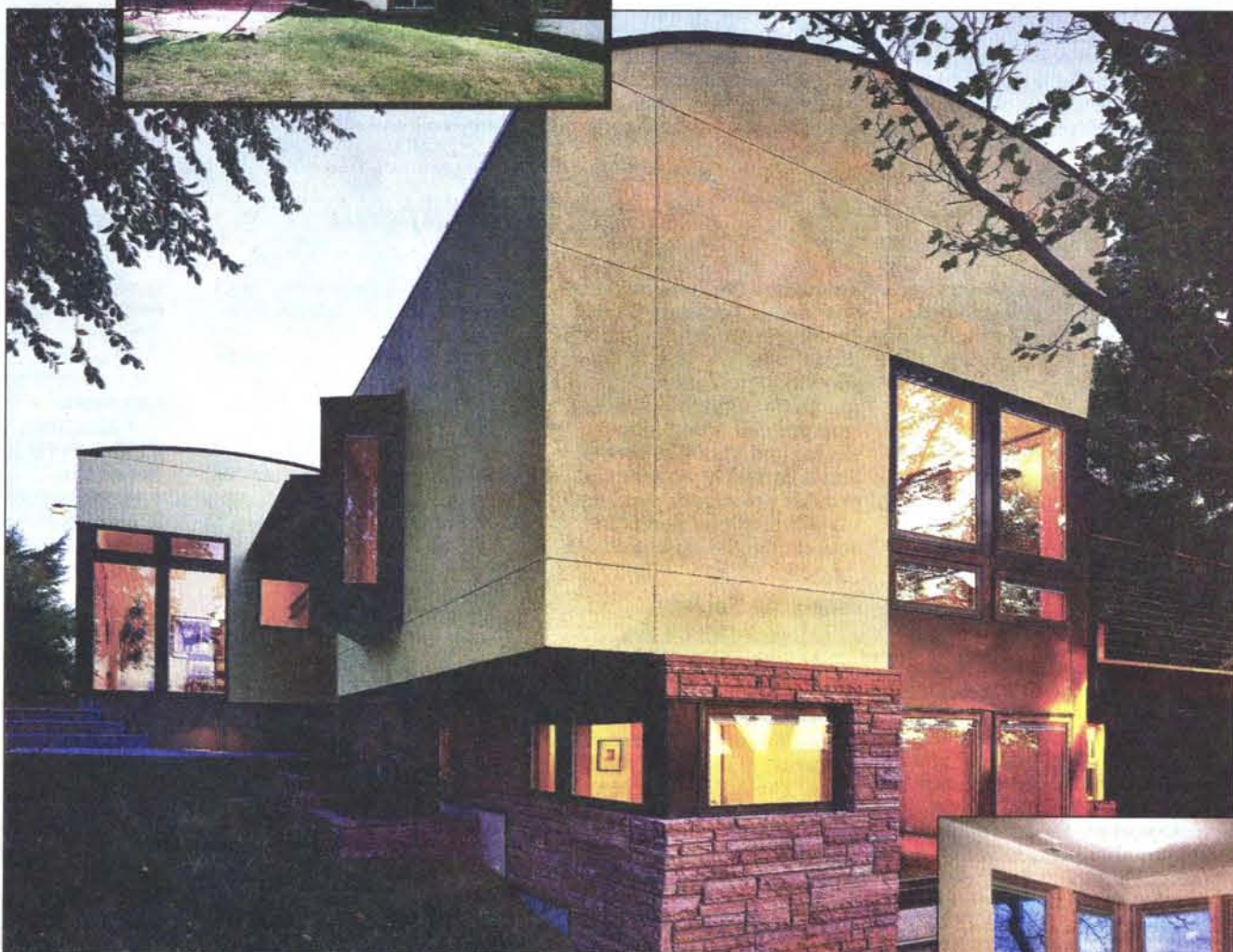


Remodel of  
Boise home  
lets the  
outside in

# Foothills fab!



Exterior photos of the remodel by Deborah Hardee. Before photos and photo of new master bedroom by Trout Architects/Chartered

This 1960s-era Boise home, shown before the remodel in the photo at top left, was redone in two phases, with the first of the projects starting in 1996. Designer Dwaine Carver of Trout Architects/Chartered changed the shape of the house to echo its location: Boise's fabulous and famous Foothills.

### ONLINE

At [IdahoStatesman.com](http://IdahoStatesman.com)

Link to the Web sites for Trout Architects/Chartered, Light Spot, Pacific Steel Fabricators of Boise and Pella windows — all key to the Foothills remodel.

### INSIDE

Learn more about the remodel and find resource information for doing a remodel, [page 7](#)

By Christine Liebenthal • The Idaho Statesman

**f**ar up in the Boise Foothills, a home has moved out of the box and into the outdoors. Confronted with a typical, boxy '60s house, designer Dwaine Carver of Trout Architects/Chartered wanted the house to reflect the Foothills and

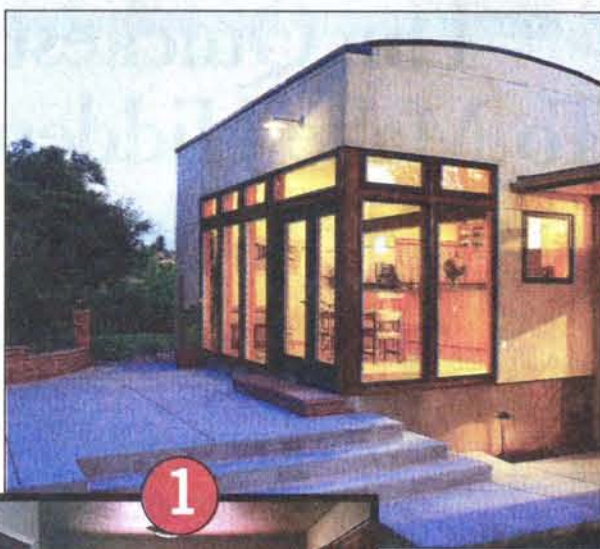
his clients' love of the outdoors. Set on a beautiful lot with breathtaking views, the home had "zero relationship to the site," Carver said.

"It could have been anywhere. There was a real strict division between inside and out," he said.

Carver came up with a two-phase plan. His goal was to make the home echo its Foothills surroundings in both form and color. For each phase, Carver built a vaulted form — one at each end of the house — with gently curved roofs and ceilings that mimic the hills.

During phase one, which took place over six months in 1996, he turned a dark, poorly functioning kitchen into a roomy, light-filled bistro-style kitchen and dining area. For phase two, which started in October 1999 and ended in May of 2000, Carver enlarged and converted an upstairs bedroom into a library, remodeled a bathroom and enlarged the adjoining living room. He took an existing porch and joined it with a new deck off the library and living room to form a wraparound deck.

In the living room, two large windows, meeting in a southwest corner, open to views of the setting sun and downtown Boise.



In the basement, Carver moved a laundry room and enlarged it to make space for the master bedroom and bath. An existing bath was converted into a walk-in closet. Next to the bedroom, the family room was converted into a shared workplace for the couple, with his and hers studios divided by a fireplace. Outside, extra bricks from the original structure were salvaged and used in garden retaining walls and a meditation



The kitchen — see before and after photos No. 1 at left — was redesigned to let the sun shine in and now offers a view in just about every direction. The master bedroom — see the before and after photos No. 2 directly above — has been moved, and with the addition of new windows is also a room with a view.

bench, designed by Carver and his client. The original exterior of the house is now painted brown and the addition a mustard color.

"The form difference between the old and new is drastic," he said.

In addition to a color palette inspired by the home's surroundings, Carver used a material palette of maple, concrete and steel throughout the house.

In its original form, the house was so stout that tearing it down and starting over didn't make sense, Carver said. Completing the project in two phases made it more economical and cut the time during which the house was torn up. While the clients lived in the home for phase one of the project, the lack of functioning bathrooms forced them to move out for

phase two.

While Carver's clients didn't want to disclose the cost of their project, Carver said that remodeling can be relatively cost-efficient.

With new home costs going up, remodeling an existing home can be a better choice under some circumstances, he said.

"You can't build a house for what you can buy a house for," he said.

To offer story ideas and comments, contact reporter Christine Liebenthal at 377-6415 or [cliebenthal@idahostatesman.com](mailto:cliebenthal@idahostatesman.com)